

# GENERAL MEMBERSHIP MEETING

NYSAWLA

OCTOBER 23, 2020





Created by Tara Tassani



# BOARD OF DIRECTORS

- Francesco L. Fratto, President, Herricks Public Schools
- Vincenza Graham, 1st Vice President, Smithtown Central School District
- Jennifer Nesfield, 2nd Vice President, Northport-East Northport Schools
- Denise Hannaoui, Secretary/Treasurer, Connetquot Central School District
- Laurie Marshall-Lauria, Board Liaison, Manhasset Schools
- Tara Tassani, Board Liaison, Cold Spring Harbor Schools

LET'S PAUSE AND REFLECT: GIVE A ONE WORD RESPONSE  
TO DESCRIBE YOUR EXPERIENCE THUS FAR!



# AGENDA

- Welcome
- Updates from NYSED - Candace Black, NYSED OBE-WL α. New NYS WL Standards and Timeline
- Election Day conference and NYSAWLA Conference Update/Webinar Series
- Membership & Collegial Circle
- FLACS Exam Update
- NYSSB
- Get involved - Future Board Members?
- Burning Issues/Topics and Open Q/A

# WELCOME CANDY!!



# ELECTION DAY!!



The New York State Association of World Language Administrators (NYSAWLA) is proud to present a free, online workshop:



## “Curating Authentic Resources for the World Language Classroom” by Leslie Grahn

November 3, 2020  
8:00 AM – 12:00 PM

The New York State Association of World Language Administrators (NYSAWLA) in collaboration with the New York State Education Department's Office of Bilingual Education and World Languages (NYSED-OBEWL) is offering a free, online workshop for world language teachers and administrators working in New York State schools.

Leslie Grahn, a noted leader, presenter, author, and blogger in the field of world language education, will explore and discuss “authentic texts”: what they are; ways to find, organize and curate them; and how to use them for intentional skill-building with students.



- |             |                                                  |
|-------------|--------------------------------------------------|
| 8:00-8:15   | Welcome - Francesco Fratto, President of NYSAWLA |
|             | Update on Standards - Candace Black, OBEWL-NYSED |
| 8:15-9:15   | Session 1                                        |
| 9:15-9:45   | Group work time followed by reflection           |
| 9:45-10:00  | Questions                                        |
| 10:00-10:15 | Break                                            |
| 10:15-11:15 | Session 2                                        |
| 11:15-11:45 | Group work time followed by reflection           |
| 11:45-12:00 | Questions & closure                              |



Participants are encouraged to create a free, Pinterest account prior to the date of the workshop (<https://www.pinterest.com/>)

Those who attend the live, online workshop will be provided with a certificate of attendance documenting (four) 4 hours of CTLE credit. A maximum of 950 registrations will be accepted. The live webinar will be recorded and uploaded to the NYSAWLA and OBEWL websites for on-demand viewing by teachers who are unable to attend virtually. Certificates of attendance will not be provided for this on-demand viewing.

To register: <https://wlnys.wufoo.com/forms/zziybhp0rka0s/>

NYSAWLA and NYSED are approved CTLE providers.



# NYSAWLA WEBINARS

\$50.00!

JENNIFER NESFIELD

## NYSAWLA 2020 - 2021

Professional Development Webinar Series

Building Blocks of Proficiency



In lieu of our annual in-person conference, NYSAWLA will present a winter/spring webinar series in which we delve into the topics of building proficiency and teaching language in a hybrid learning environment.

Here is a sneak peek at some of the workshops being offered:

### December 2020:

**Engaging Learners in a Hybrid Classroom: Adapting Protocols to Enhance Instruction**

*Presenter: Mr. David Balsamo, Syosset SD*

**How can Google Classroom enhance your in class and remote instruction?**

*Presenter: Ms. Danielle Milazzo, Northport-East Northport UFSD*

### January 2021:

**The Care and Feeding of a Student Teacher**

*Presenters: Mr. William C. Anderson and Dr. Elvira Morze, Hofstra University*

**Using FlipGrid to Take Language beyond the Classroom**

*Presenter: Ms. Ada Duran, Valley Stream CHSD*

### February 2021:

**Our Journey towards Proficiency: Embedding the Modes of Communication**

*Presenter: Ms. Tara Tassani, Cold Spring Harbor SD*

**Make the Transformation to Communication**

*Presenters: Ms. Rosa Kaplan and Ms. Renee Owenburg, Bellmore-Merrick CHSD*

### March 2021:

**Teaching World Language in a Hybrid environment. How Technology Integration can enhance student engagement**

*Presenter: Ms. Tamar Cedeno-Ramos, Northport-East Northport UFSD*

A \$50 webinar series registration fee will include access to all webinars presented between December 2020 and April 2021.

Complete details, descriptions, and a registration link will be sent out in the coming weeks

NYSAWLA is an approved CTLE provider.  
There will be over 10 one hour sessions offered.





# MEMBERSHIP & COLLEGIAL CIRCLE

- Denise Hannaoui and Vincenza (Enza) Graham
- Membership fees remain the same!

# FLACS EXAM UPDATE

- Vincenza (Enza) Graham and Denise Hannaoui
- June 2021 FLACS Assessments are complete!

# NYS SEAL OF BILITERACY

- Denise Hannaoui



## BURNING ISSUES, TOPICS AND Q/A



*"A leader takes people where they want to go. A great leader takes people where they don't necessarily want to go, but ought to be."*





# HOW DO WE SURVIVE AND THRIVE AS LEADERS? HOW DO WE SUPPORT OUR TEACHERS?

BY COLLABORATING!

BY TAKING RISKS

BY ACCEPTING THAT YOU WILL MAKE MISTAKES

BY ENSURING THE SOCIAL AND EMOTIONAL NEEDS OF ALL, INCLUDING YOURSELF!

The background is a gradient of blue shades. On the left, there are white circuit-like lines and nodes. In the center, there is a faint, dark silhouette of a human brain. The overall aesthetic is technological and educational.

# RETHINKING TEACHING

- Don't replicate school
- Keep High Expectations
- SEL is even more critical
- Abandon Surveillance and Control Tools



# TRADITIONAL VS. LESSONS BASED ON THE MODES OF COMMUNICATION

## INSTEAD OF....

- Long lectures/explanations
- Worksheets
- Traditional Assessments
- Feedback

## TRY THIS...

- Mini-lessons with student based activities
- GoogleDocs, Webquests, blogs, Quizlet, etc
- Performance-based Assessments
- Use of games to assess and provide feedback – Kahoot!

# LET'S BRAINSTORM TOGETHER...

## INSTEAD OF...

- Writing prompts

## TRY THIS...

- Use Google Docs to have students co-create stories

# LESSON PLAN DESIGN...

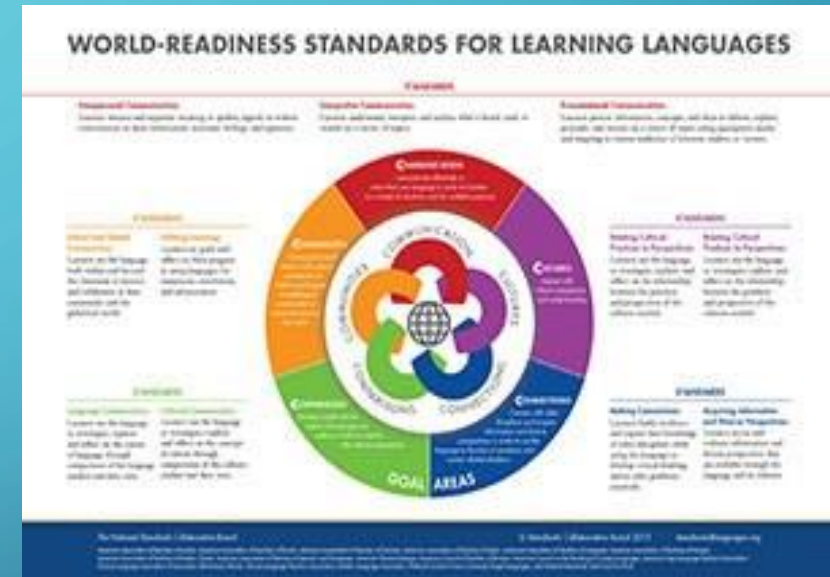
- Review via an online APP or Google Doc – interactive and fun!
- Introduction of the topic: flipped video? Video?
- Mini-lesson and release
- Comprehension check
- Activity based on a mode(s) – multistep
- Constant assessing
- Student vocabulary



# THE 3 BUCKET IDEA TO LESSON PLANNING...



**Presentational**  
**Interpersonal**  
**Interpretive**



## Middle School, Grade 8

Key Question: How do I/you look at the world?

Theme: **Work/Careers**

Topic: Interests and Careers

Communication Mode:	<i><b>Interpretive</b></i>	<i><b>Presentational</b></i>	<i><b>Interpersonal</b></i>
<i><b>Performance Assessment</b></i>	Read about a student from the target culture who describes his/her daily schedule including interests, part-time jobs, school coursework, weekend activities, social life, future plans. Summarize similarities and differences between the student's life and your own; draw some conclusions about how compatible you would be with this student, giving reasons for your conclusions.	Give a presentation about your life and interests. Indicate how these activities reflect your personality. Include some possibilities for your future in terms of career, study, travel, pursuing personal interests.	Discuss with a group of classmates plans for high school. Indicate what kinds of courses you will take and how they will prepare you for your future plans. Discuss career options and which ones interest or don't interest you and why.

ACTFL Performance-based Assessment



## What is my proficiency level and how can I level up?

Parrot			Survivor/Creator			Reporter		
<b>Novice Low</b>			<b>Novice Mid</b>			<b>Novice High</b>		
<ul style="list-style-type: none"> <li>Speak in lists &amp; memorized phrases</li> </ul>			<ul style="list-style-type: none"> <li>Speak in lists &amp; memorized phrases</li> <li>25-50 words</li> <li>No language creation</li> <li>Introduce self and others</li> </ul>			<ul style="list-style-type: none"> <li>Speak in phrases</li> <li>Limited to memorized chunks</li> <li>Ask &amp; answer simple questions</li> </ul>		
<ul style="list-style-type: none"> <li>Combine words and phrases into sentences</li> <li>Practice asking questions</li> <li>Continue learning new words and phrases</li> </ul>			<b>Inter. Low</b>			<b>Inter. Mid</b>		
			<ul style="list-style-type: none"> <li>Speak in complete sentences</li> <li>Simple conversation about common topics</li> </ul>			<ul style="list-style-type: none"> <li>Create language with some memorized phrases</li> <li>Topics related to self</li> <li>Create &amp; respond to information questions</li> </ul>		
						<b>Inter. High</b>		
						<ul style="list-style-type: none"> <li>Use language to do multi-step task</li> <li>Handle a complication</li> <li>Present opinion with reason and support</li> <li>Speak in present, past &amp; future with errors</li> </ul>		
						<b>Advanced Low</b>		
						<ul style="list-style-type: none"> <li>Formal &amp; informal conversation</li> <li>Narrate &amp; describe in paragraphs</li> <li>Circumlocute occasionally</li> <li>Some speech hesitant and irregular</li> <li>Narrate in present, past &amp; future with infrequent errors</li> </ul>		
						<b>Advanced Mid</b>		
						<ul style="list-style-type: none"> <li>Narrate in present, past &amp; future with limited errors</li> <li>Speak well on concrete topics &amp; familiar topics</li> <li>Handle unanticipated language</li> </ul>		
						<b>Advanced High</b>		
						<ul style="list-style-type: none"> <li>Speak with ease on a variety of topics</li> <li>Hesitant with abstract topics</li> <li>Speak very well on concrete topics</li> <li>Paraphrase &amp; circumlocute with ease</li> </ul>		





# ENCOURAGE TEACHERS TO.....



The background is a blue gradient with faint concentric circles. White circuit-like lines with circular nodes are positioned in the corners: top-left, top-right, bottom-left, and bottom-right.

TO EXPLORE MORE, JOIN THE COLLEGIAL CIRCLE!

# RESOURCES TO EXPLORE...

- Ohio Dep't of Education
  - <http://education.ohio.gov/Topics/Learning-in-Ohio/Foreign-Language/World-Languages-Model-Curriculum/World-Languages-Model-Curriculum-Framework/Instructional-Strategies/World-Languages-Resource-Center>
- NYSED OBEWL
  - <http://www.nysed.gov/common/nysed/files/programs/bilingual-ed/resource-collection-for-world-languages-2020-05-04.pdf>
- Leslie Grahn
  - <https://www.grahnforlang.com/>
- Edutopia: Six top tech tools for WL teachers
  - <https://www.edutopia.org/article/6-top-tech-tools-world-language-classes>
- Language Magazine
  - <https://www.languagemagazine.com/2020/08/12/giving-world-languages-a-voice-virtually/>



# GENERAL MEMBERSHIP MEETING

NYSAWLA

OCTOBER 23, 2020